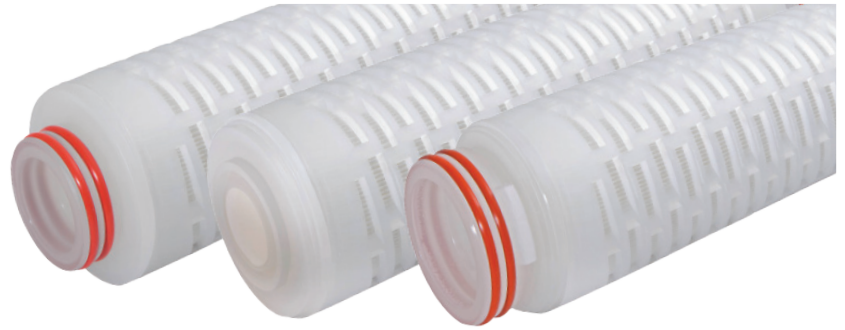
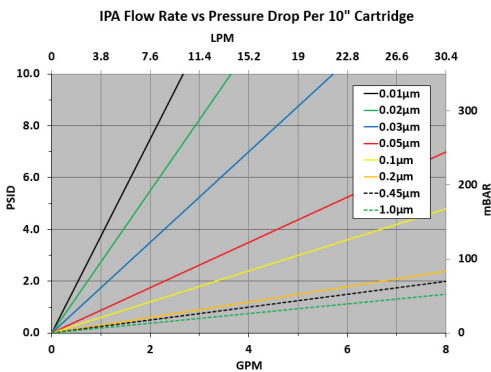


EPTFE-Series Electronics Grade PTFE

EPTFE-Series High Purity Electronics Grade PTFE Filter Cartridges, with expanded polytetrafluoroethylene (PTFE) membrane, provide superior chemical resistance in high-purity microelectronics applications. With retention ratings as fine as 0.02 micron (20 nanometers), consistent contaminant removal is achieved in aggressive fluids and organic solvents. In air and gas applications, the single-layer PTFE membrane delivers superior hydrophobicity versus polypropylene or PVDF, offering a superior option to preclude water wetting and associated diminished flow. Each element is integrity tested to assure optimal performance. Manufactured in a clean-room environment to maintain high standards of purity and cleanliness.

Flow Rate vs Pressure Drop



Typical Applications

- Solvent filtration
- Etching bath solutions
- High purity rinse water
- Photochemical solutions
- Bulk chemical delivery
- Ultrapure electronics - grade gases

Construction Materials

Membrane.....PTFE
Support Layers.....Polypropylene
Cage/Core/Adapters.....Polypropylene
Seals.....Buna, EPDM, Silicone, Teflon® Encapsulated Viton®, Viton®

Note:

Cartridges are available with wet-pack option (60/40 IPA/DI water solution) to eliminate the need to wet-out in the environment.

Dimensions

Length:

10 to 40 inches (25.4 to 101.6 cm) nominal

Outside Diameter:

2.70 inches (7.0 cm) nominal

Operating Conditions

Change Out ΔP (recommended).....35 PSID

Temperature (max).....176°F (80°C)

Differential Pressure (max).....50 PSID
 (3.4 bar) at 68°F (20°C)

Food Safety Compliance

Materials of construction comply with FDA regulations for food and beverage contact use as detailed in the US Code of Federal Regulations, 21CFR. Materials used to produce filter media and hardware are deemed safe for use in contact with foodstuffs in accordance with EU Directives 2002/72/EC, 1935/2004, and/or 10/2011.

Ordering Information

EPTFE	Rating (µ)	A	Length	C	End Cap Style	O-Rings/Gaskets	Options
	0.02 (20 nm)		10" (25.4 cm)		2 = DOE Flat Gasket	B = Buna	I = Stainless Steel Insert
	0.03 (30 nm)		20" (50.8 cm)		3 = 222 w/ Fin	E = EPDM	W = Wet-Packed
	0.05 (50 nm)		30" (76.2 cm)		4 = 222 w/ Flat Cap	S = Silicone	
	0.1		40" (101.6 cm)		6 = 226 w/ Flat Cap	T = Teflon® Encapsulated Viton®	
	0.2				7 = 226 w/ Fin	V = Viton®	
	0.45				28 = 222 3-tabs w/ Fin		
	1.0						

DISCLAIMER: Filtration data presented is representative of performance observed in controlled laboratory testing. It is not given as a warranty, specification or statement of fitness for use. Specific performance can vary widely depending on contaminant type, fluid properties, flow rates and environmental conditions. It is recommended that users conduct thorough qualification testing to assure the product functions as required. For additional technical support, a product Performance Guide is available upon request.

DS_EPTFE_190918